

# Project GREEN

Making Johnson County even more Beautiful

## Trees: An Environmental Investment

**Geoff Mouming, Project Manager, ISA Certified Arborist**

[gmouming@impact7g.com](mailto:gmouming@impact7g.com)



# Your Speaker

---

- Project Manager for Restoration Services at Impact7G
  - Prairie Establishment/Management
  - Controlled Burning
  - Timber Stand Improvement
  - Tree Planting
  - Natural Areas Management
- 30+ Years Commercial Landscape Management
- ISA Certified Arborist
- Iowa Valley Resource Conservation and Development
- Rotary Club of Coralville/North Corridor-TREE Committee

# Goals and Objectives

---

- The State of Trees in Our State
  - Pre-Settlement Tree Cover
  - Current State
  - Local Urban Tree Canopy
  - What Have we Gained/Lost (e.g. 2020 Derecho, EAB)
- Understand the Value of Trees
  - Principles of Micro Tree-economics (individual trees, landscape, specimen)
  - Principles of Macro Tree-economics (forests, woodlands, timber, urban tree canopy)

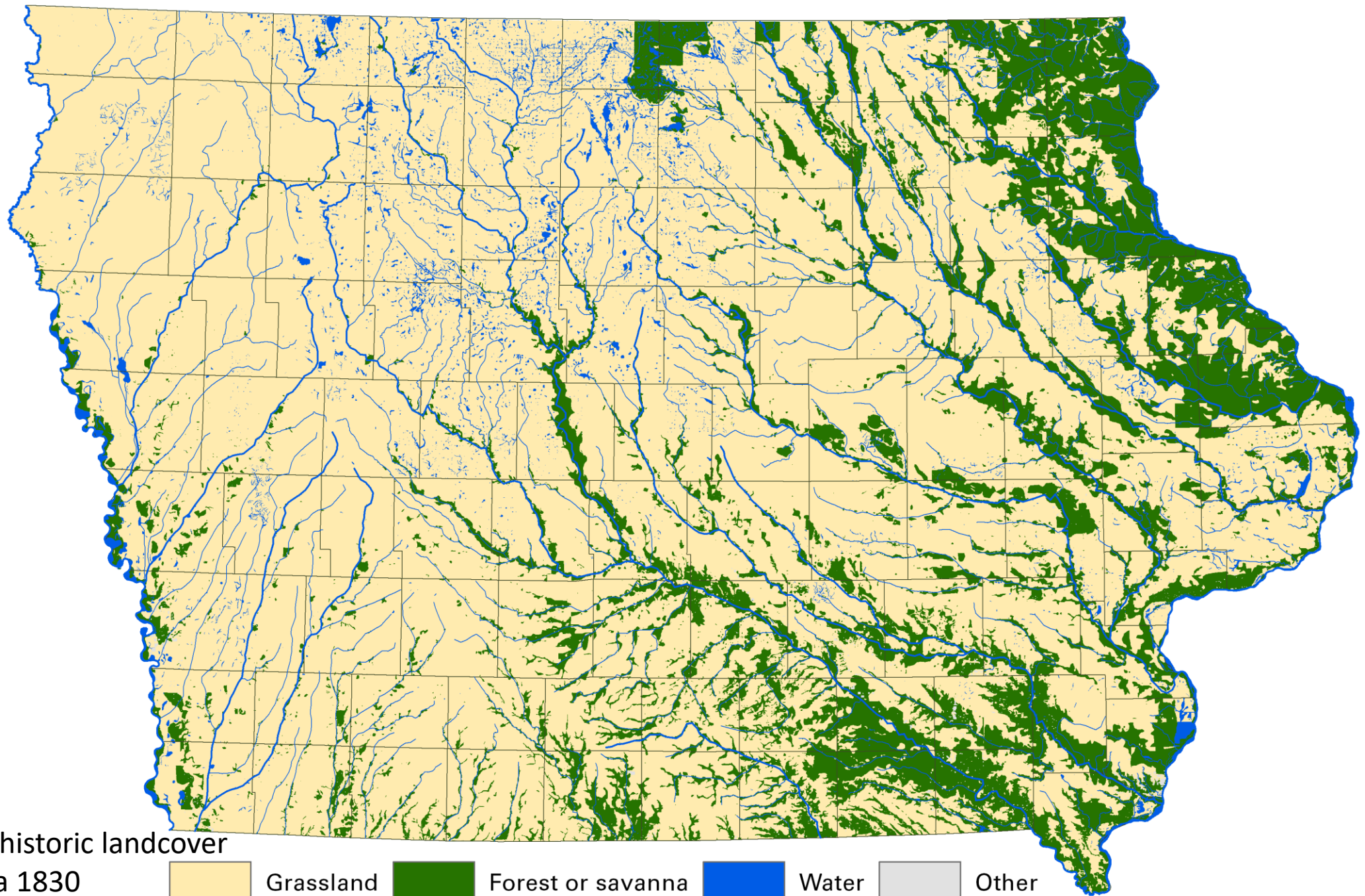
# Goals and Objectives

---

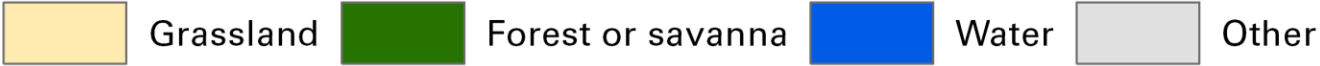
- Growing Our Tree Investment Portfolio
  - Past Performance Does Not Guarantee Future Results
  - Diversify
  - Succession Planning/Tree Legacy
- Action Steps
  - Plant Trees (“Right Tree, Right Place”)
  - Take on a Tree Planting Project and Define Its Purpose
  - Consider Tree/Environmental Organizations for Your Giving
  - Hug Trees!



# The State of Iowa's Tree Canopy in 2024

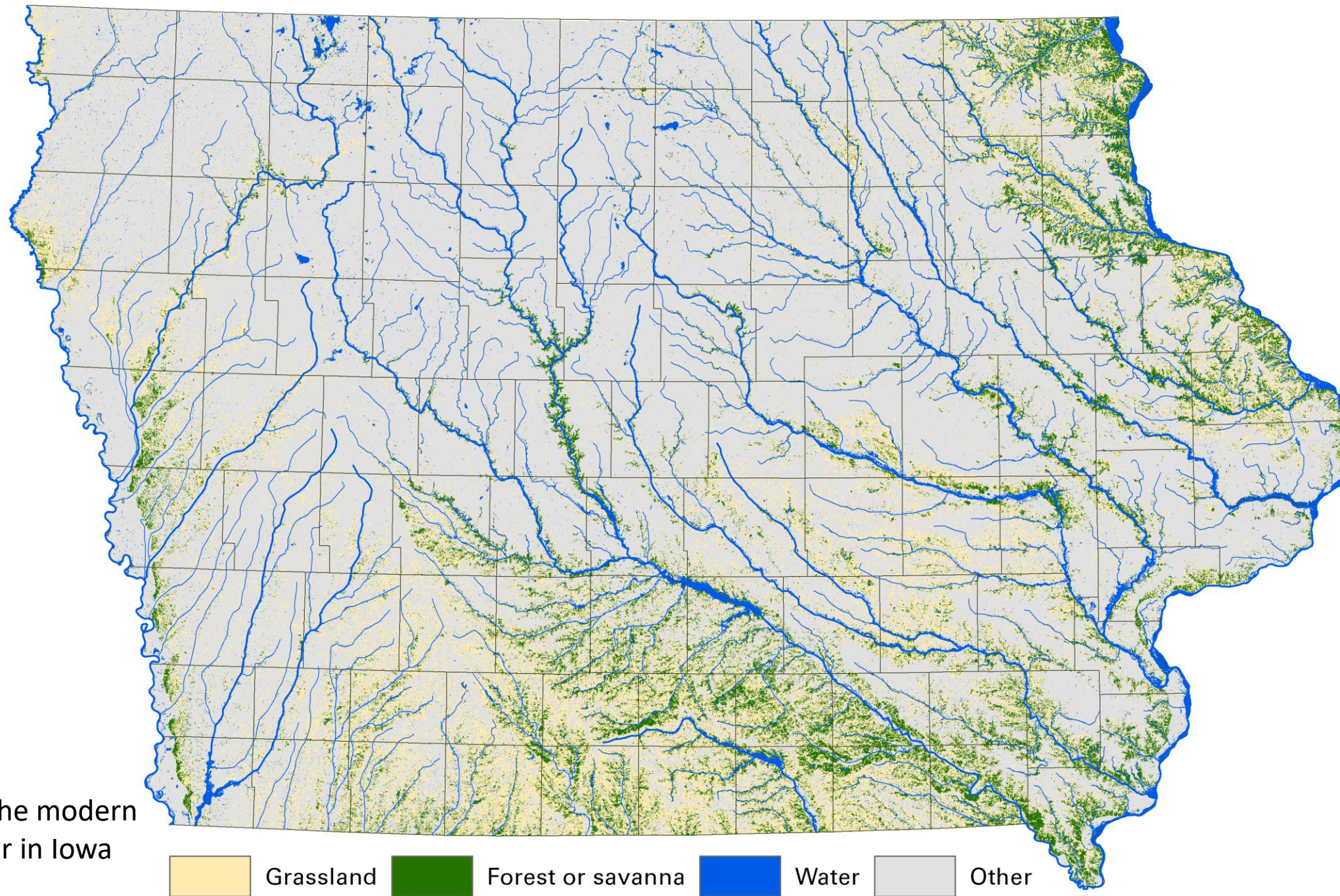


Map of the historic landcover  
in Iowa circa 1830





Map of the modern  
landcover in Iowa





# Trees in Iowa at a glance

---

- Forested area of Iowa pre-settlement estimated at 19%
- 1950's-7%
- Today-about 8.5%
- 85%+ privately owned (90%+ with Urban Tree Canopy)

For More Reading: *Iowa's Forests Today (2010, introduction)*

[https://www.iowadnr.gov/portals/idnr/uploads/forestry/ift\\_intro.pdf](https://www.iowadnr.gov/portals/idnr/uploads/forestry/ift_intro.pdf)

# Forests of Iowa, 2021



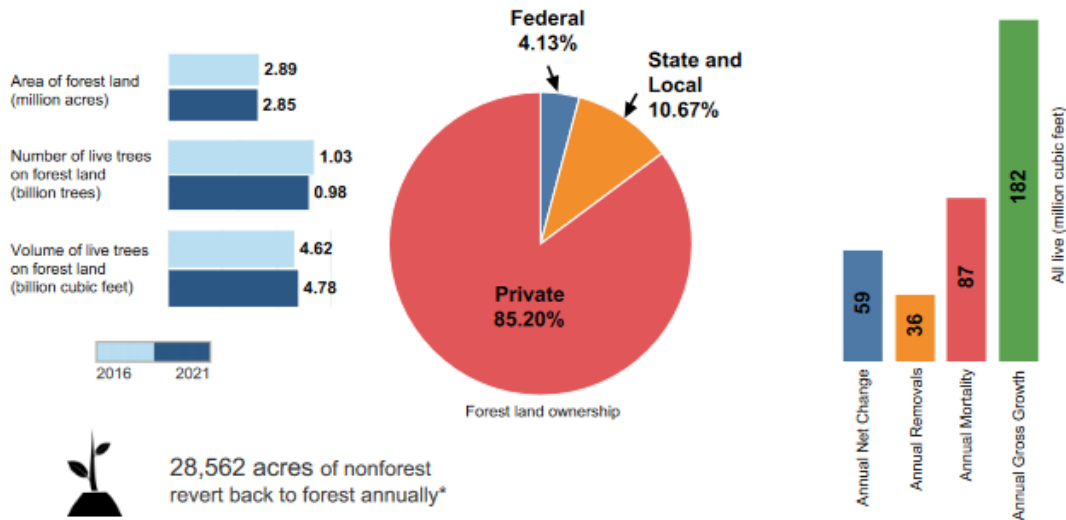
8% forested\*

Iowa has an estimated **2,851,077** acres of forest land.

\* Percent forest is forest area/total area. Percent forest with water removed from total area is 8%.

This resource update is a brief look at some of the basic metrics that describe the status of and changes to forest resources in Iowa. This information is based on field data collected using the USDA Forest Service Forest Inventory and Analysis (FIA) annualized sample design, and it is updated yearly.

Iowa has 5,966 sample plots across the State, of which 625.0 are currently forested. Each year, about 10-20 percent of these plots are visited and measured by field crews. Data used in this update were accessed from the FIA database on 06/02/2022.



28,562 acres of nonforest revert back to forest annually\*



24,103 acres of forest land convert annually\* to nonforest



15,213 acres of forest land are treated by cutting (harvest, thinning, etc.) annually\*



3,906 acres of forest land are disturbed annually\* by fire



14,546 acres of forest land are disturbed annually\* by weather events

## USDA Forest Service - Forest Inventory & Analysis



The estimates presented are based on data retrieved from the FIA database (06/02/2022) and may not reflect the most recent data available from the FIA program. Note – this publication does not include estimates of uncertainty. The most current data and sampling error for the estimates above can be found by visiting <https://www.fia.fs.usda.gov/>.

\*Average annual estimates are based on data collected across 5-10 years and may not be indicative of the nominal year presented in the title by itself.

Pre-Settlement Forest Cover  
6.7 million acres

Today  
2.9 million acres

[https://www.fs.usda.gov/nrs/pubs/ru/ru\\_fs363.pdf](https://www.fs.usda.gov/nrs/pubs/ru/ru_fs363.pdf)

# Zooming In: Iowa City's Urban Tree Canopy

- Iowa DNR/PlanIt Geo
- 2018 Urban Forest Management Plan
- Early EAB, Pre-Derecho
- ~45,000 Street and Park Trees
- Green Ash 6.1%
- \$4.2 Million in Annual Savings
- Full Management Plan: <https://www.iowa-city.org/WebLink/ElectronicFile.aspx?dbid=0&docid=1835179&>

## Iowa City 2018 Urban Forest Management Plan (UFMP) Overview

*A plan for Iowa City's urban forest developed by Plan-It Geo and the City's Parks and Forestry Division*

### 1. INFORMATION GATHERING

#### A. 2016-2018 Tree Inventory Analysis and Summary (pages 13-23)

- 25,451 street trees | 19,563 park trees | 4,972 planting sites
- Tree Diversity: 66 genera, 178 species
- Top Species: Silver Maple (8%)
- Size Distribution: Greatest number of trees in the 6-12" range (32%)
- Ash Tree Count: 3,515 (2,300 along streets and 1,215 in parks)

#### B. Benefits of the City-Managed Trees

- Over \$4.2 million in annual savings (page 2)



#### C. Ordinance Review (pages 9-10)

- To provide urban forest program goals, recommendations, and strategies, an extensive ordinance, policy, and practices review was conducted following the U.S. Forest Service's Urban Forest Sustainability and Management Audit.

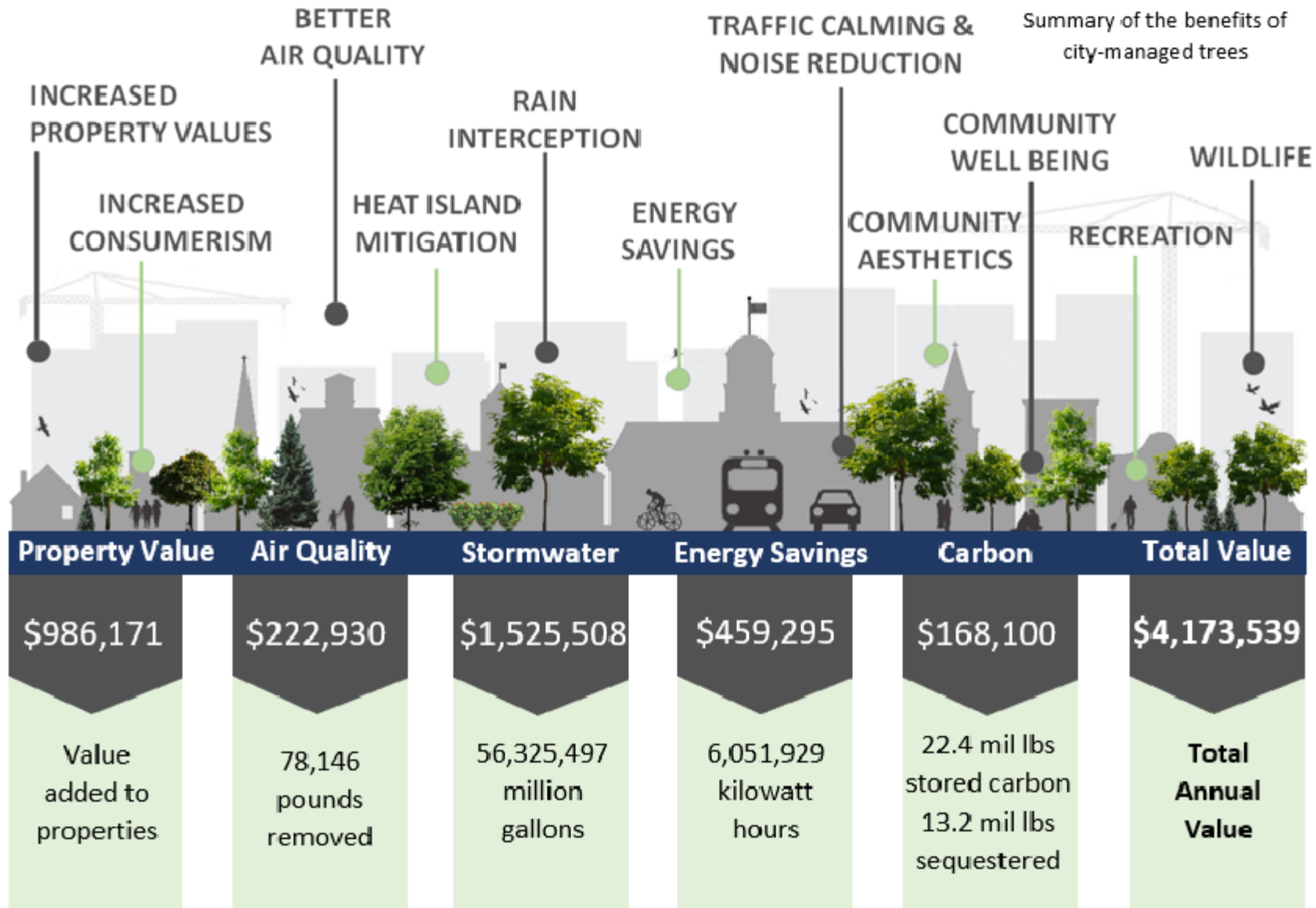
#### D. Urban Forest Sustainability & Management Audit (pages 4-5, ii-iii)

##### 10 Categories of the Audit

1) Management Policy and Ordinances:	64% Achieved
2) Professional Capacity and Training:	38% Achieved
3) Funding and Accounting:	58% Achieved
4) Decision and Management Authority:	75% Achieved
5) Inventories:	62% Achieved
6) Urban Forest Management Plans:	75% Achieved
7) Risk Management:	56% Achieved
8) Disaster Planning:	36% Achieved
9) Practices, Standards, and BMPs:	83% Achieved
10) Community:	71% Achieved

Overall Urban Forest Sustainability and Management: 68% Achieved

# The Benefits & Value of the City-Managed Trees

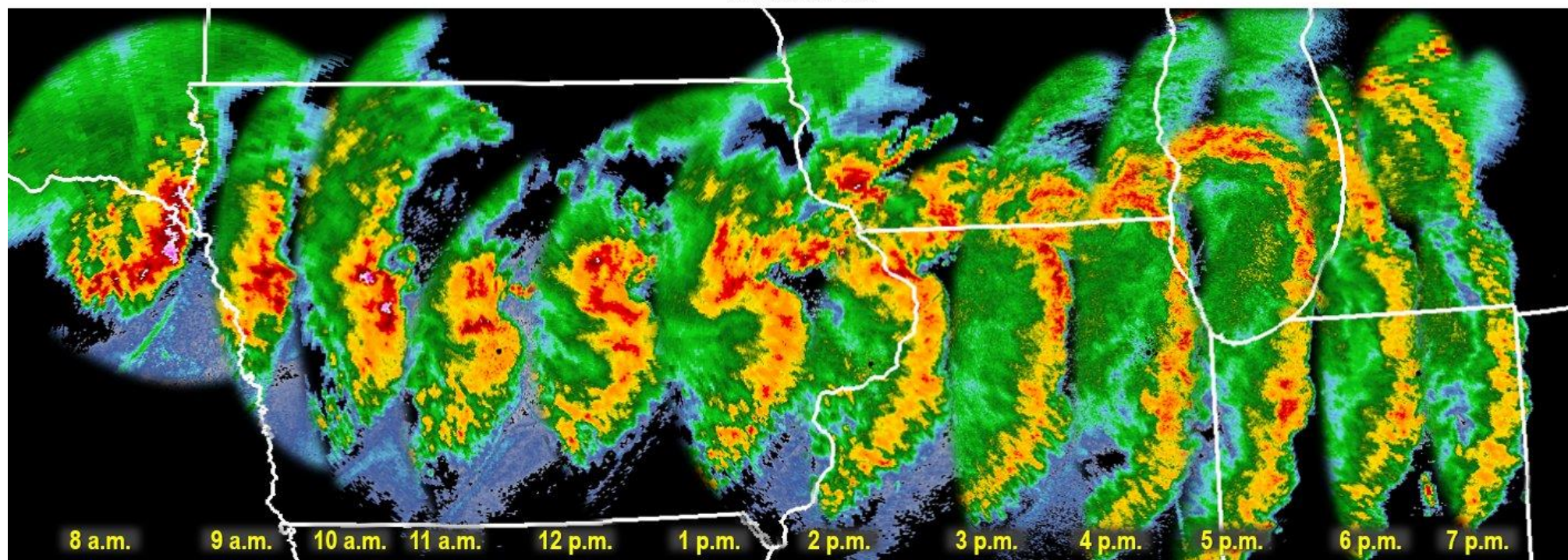




# Recent Impacts to our Urban Tree Canopy

August 10, 2020 Derecho: Lowest Angle NWS Radar Reflectivity at One-Hour Time Steps

*All times in CDT*



This long-lasting, severe wind thunderstorm complex (known as a derecho) produced hundreds of reports of damage along with likely a few tornadoes.



NWS Chicago | [weather.gov](https://weather.gov)

Aug 11, 2020



# August 10, 2020 Derecho

**Table 1. Estimated structural value and benefit loss in Iowa due to the derecho wind event on August 10, 2020. Data source: Nowack & Greenfield, 2018.**

Structural Loss					
Trees		Leaf Area	Leaf Biomass	Carbon Storage	
# of trees	Trees Per Capita	Acres	Tons	Tons	\$
4,424,426	17.60	103,193	35,343.81	735,254.47	90,294,408.12

Annual Benefit Loss						
Carbon Sequestration		Avoided Emissions		Air Pollution Removal	Avoided Energy Use	Total
Tons/Year	\$/Year	Tons/Year	\$/Year	\$/Year	\$/Year	\$/Year
22,870.28	2,966,816.12	335.38	2,708,832.24	7,713,722.29	6,849,475.82	20,238,846.62

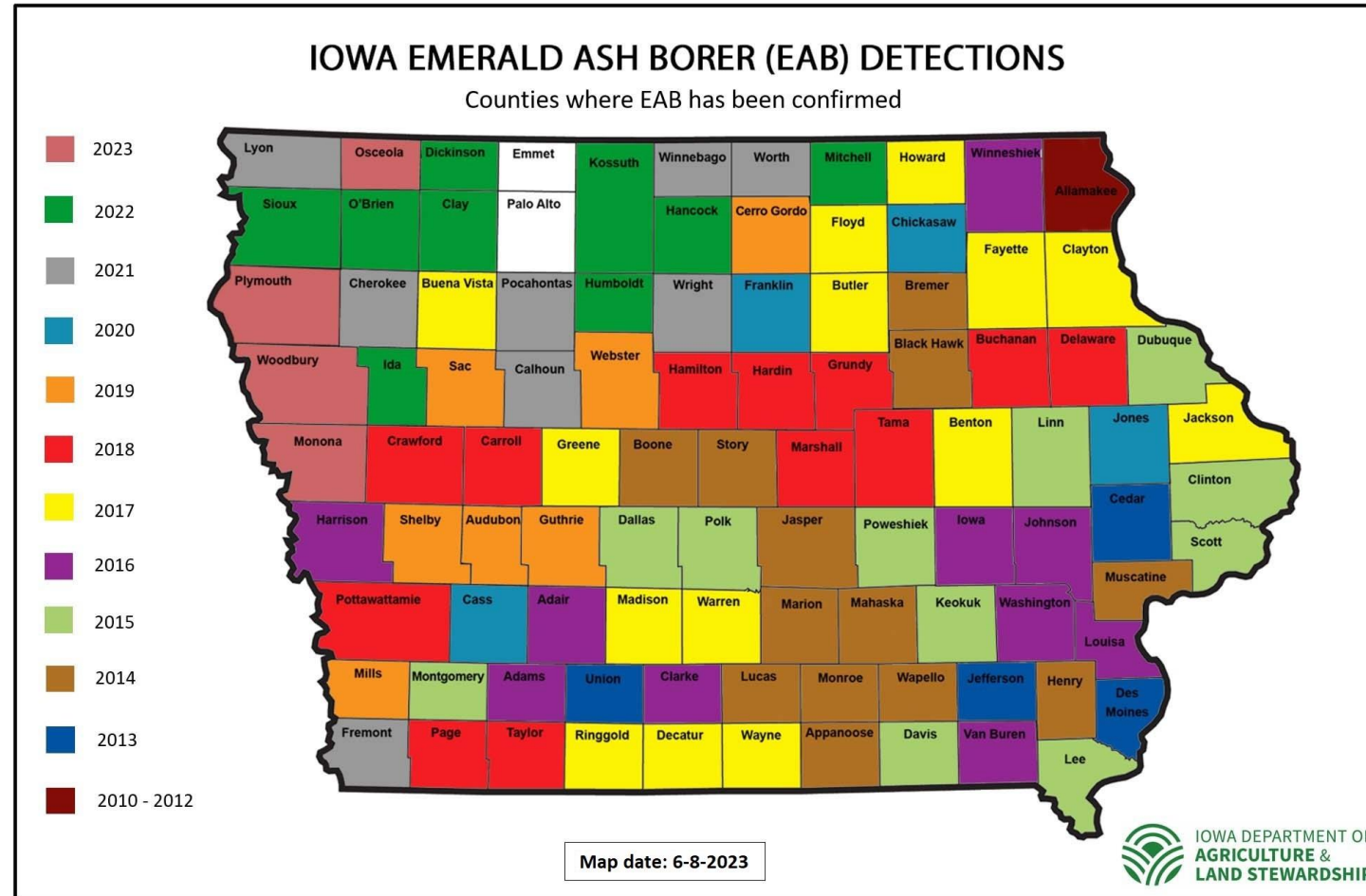
Source: <https://www.iowadnr.gov/Portals/idnr/uploads/forestry/DerechoReport.pdf>

# Localized Impact

Table 2. Summary of damage for derecho affected counties in Iowa derived from USFS aerial flight assessment.

County	Estimated acres of canopy damaged	Estimated number of trees damaged
Total	32,773	4,424,426
Benton	548	74,125
Boone	805	108,702
Cedar	272	36,664
Clinton	2,580	348,344
Dallas	3,204	432,488
Greene	271	36,649
Grundy	185	24,973
Guthrie	247	33,369
Hardin	656	88,573
Iowa	113	15,255
Jackson	82	11,045
Jasper	1,004	135,519
Johnson	1,738	234,567
Jones	640	86,432
Linn	7,061	953,224
Marshall	1,037	140,039
Muscatine	550	74,192
Polk	4,758	642,348
Poweshiek	413	55,752
Scott	3,809	514,163
Story	1,869	252,292
Tama	675	91,173
Washington	256	34,538

# Emerald Ash Borer (EAB)



Iowa Department of Agriculture & Land Stewardship, Entomology & Plant Science Bureau, [Entomology@IowaAgriculture.gov](mailto:Entomology@IowaAgriculture.gov), 515-725-1470

Instructions

Forests

About EAB Calculator

Contact Us

Tutorials

You're using **Firefox 123** on Windows.

Best Viewed in Mozilla Firefox | Download the latest version of [Mozilla Firefox](#) now.

If using Internet Explorer (IE) 8, please click the compatibility view button for compatible viewing.



(Found in menu bar above) For more information, please visit [Microsoft](#)

Welcome **Geoff Mouming** ([logout](#))



## Account Information

**User Name:** gmouming

**Name:** Geoff Mouming

**Email:** gmouming@impact7g.com

**City:** North Liberty

**State:** IA

**Zip:** 52317

## Urban Forests

Demo with Bulk Prices This is an example of a real Indiana urban forest. [Delete](#)

New Forest



| Emerald Ash Borer Cost Calculator |

[Purdue University](#) | [Purdue Agriculture](#) | [Entomology](#) | [Entomology Extension](#)



Copyright © 2008, Purdue University, all rights reserved

Website developed and maintained by the Entomology Extension at Purdue University

If you have trouble accessing this page because of a disability, please contact the [Webmaster](#).

[An equal access/equal opportunity university](#)

# EAB Costs (estimated)

---

- Estimated 37.9 million Ash on developed land in the US\*
- \$25 billion cost for treatment/removal/replacement\*

\*Sydnor, T.D., Bumgardner, M., Todd, A., 2007. The potential economic impacts of emerald ash borer (*Agrilus planipennis*) on Ohio, U.S., communities. *Arboriculture & Urban Forestry* 33 (1), 48–54

\$\$\$\$\$\$\$\$\$\$\$\$

# The Value of our Trees

# Principles of Micro Tree-economics

---

- Individual trees, landscape, specimen, small-scale planting
- Valuing individual trees (iTree)
- ROI from planting a tree
- Environmental ROI from planting a tree
- Right Tree, Right Place

# Small Scale Planting

---

- Am I Making a Difference?
- Yes!
- The trees in your yard are part of the Urban Tree Canopy and add to the benefits provided by the street and park trees.
- Our tree canopy is not a “set it and forget it” proposition. It needs to be continuously renewed.
- “When is the best time to plant a tree? 20 years ago...when is the second best time to plant a tree? Right now!”



# My Favorite Iowa City Tree

- Bur Oak (*Quercus macrocarpa*)
- 405 North Riverside Drive-former St. Thomas More church



## MyTree Benefits



### For this year.

Oak spp, (*Quercus*)

Serving Size: 50.00 in. diameter

Condition: Excellent

Location: Iowa City, Ia, United States

Estimated this year: \$16.81

Discover benefits of all your [community trees!](#)

#### Annual values:

Carbon Dioxide Uptake \$3.70

Carbon Sequestered<sup>1</sup> 43.34 lbs

CO<sub>2</sub> Equivalent<sup>2</sup> 158.9 lbs

Storm Water Mitigation \$8.29

Runoff Avoided 927.93 gal

Rainfall Intercepted 4,730.07 gal

Air Pollution Removal \$4.82

Carbon Monoxide 0.56 oz

Ozone 33.75 oz

Nitrogen Dioxide 2.15 oz

Sulfur Dioxide 2.23 oz

PM<sub>2.5</sub> 1.27 oz

#### Values are totals to date:

Carbon Dioxide Uptake<sup>4</sup> \$924.70

Carbon Storage<sup>4</sup> 10,843.56 lbs

CO<sub>2</sub> Equivalent<sup>2, 4</sup> 39,759.72 lbs

# Benefits of Trees

Trees provide social, communal, environmental, and economic benefits.



Trees provide benefits that promote health, social well-being, and even help your home. Trees serve many purposes in your local community and throughout the entire world.

## Social Benefits

- Trees provide beauty and help people feel serene, peaceful, restful and tranquil.
- Trees significantly reduce workplace stress and fatigue and decrease recovery time after medical procedures.
- Trees may help reduce criminal activity.

## Economic Benefits

- Property values of landscaped homes are 5%– 20% higher than non-landscaped homes.
- Individual trees have value that is affected by size, condition, and function. In general, the larger the tree, the greater the value.
- Air conditioning costs are lower in a tree-shaded home; and heating costs are reduced when a home has a windbreak.
- Well-maintained trees can add value to a home.

## Communal Benefits

- City trees often serve architectural and engineering functions by providing privacy, emphasizing views or obstructing objectionable views.
- Trees may reduce glare/reflection or direct pedestrian traffic.
- Trees may soften, complement, or enhance architecture.
- Trees bring natural elements and wildlife habitats into urban surroundings, all of which increase the quality of life for residents in the community.



## Environmental Benefits

(See figure above)



A: Leaves filter the air we breathe by removing dust and other particles; absorbing carbon dioxide and various air pollutants such as ozone, carbon monoxide and sulfur dioxide; and release oxygen.

B: Deciduous shade trees cool homes in the summer and allow the winter sun to heat homes when they lose their leaves.

C: Trees help cool the environment, working as a simple and effective way to reduce urban heat islands (pavement and buildings in commercial areas cause higher temperatures by absorbing the sun's heat).

D: Trees can serve as a windbreak. The more compact the foliage on the group of trees the more effective the windbreak.

E: Trees intercept water, store some of it and reduce stormwater runoff.

<div data-bbox="817 279 894 315">  </div> <div data-bbox="1054 279 1424 311">KEY FINDINGS</div> <div data-bbox="1577 279 1653 315">  </div>
<ul style="list-style-type: none"> <li>• The presence of street trees increased the sale prices of houses in east Portland neighborhoods by an average of \$8,870 and reduced time on the market by an average of 1.7 days.</li> </ul>
<ul style="list-style-type: none"> <li>• A tree in front of a house increased the house's sale price by an average of \$7,130. The tree's benefits spilled over to houses within a 100-foot radius, increasing their combined value by \$12,828.</li> </ul>
<ul style="list-style-type: none"> <li>• Citywide, street trees add \$1.1 billion to Portland's property value, or \$45 million a year. Annual maintenance costs of \$4.6 million are a small fraction of the trees' value and are mostly borne by property owners.</li> </ul>
<ul style="list-style-type: none"> <li>• Shade trees growing on the west and south sides of Sacramento houses lower summertime electricity use by reducing the need for air conditioning. The combined west- and south-side tree cover reduced summertime electricity bills by an average of \$25.16.</li> </ul>

USDA Pacific Northwest Research Station, 2010

# Principles of Macro Tree-economics

---

- Reduce Stormwater Runoff
- Carbon Sequestration
- Improved Air Quality
- Energy Savings
- Increased Property Value
- Tree Equity Score





## TreePlotter™ INVENTORY

The City of Iowa City utilized TreePlotter™ INVENTORY to effectively and clearly communicate the findings with their community. Citizens and stakeholders can easily access the individual tree data such as name, address, eco-benefits, and a street view image.

The Landing Page provides quick facts as well as links to the Urban Forest Management Plan, Iowa Pests website, and other important resources.

## Key Insights

**44,276**

NUMBER OF TREES

**8**

TOP SPECIES: SILVER MAPLE

**70" Diameter**

LARGEST TREE: COTTONWOOD

# Urban Forest Benefits

## Stormwater Runoff Reduction

56.3 million gallons | \$1.5 million in savings

## Carbon Sequestration

22.4 million lbs. stored | 13.2 million lbs. sequestered | \$168K value

## Air Quality

78K lbs. of pollutants removed | \$223K value

## Energy Savings

6 million KWH | \$460K in savings

## Property Value

\$986K increase in value



“

The benefits of the city-managed trees equates to \$4.2 Million in annual savings

Manage consent

## TREE EQUITY SCORE BY THE NUMBERS



Tree Equity Scores are available for nearly 200,000 urban neighborhoods in the United States.



More than 260 million people live in the neighborhoods covered by Tree Equity Score.



We need over 500 million more new trees to achieve Tree Equity in all areas with inadequate tree cover.



These trees would provide ecosystem service benefits valued at nearly \$3 billion each year.

Planting trees in underserved neighborhoods addresses basic human rights to health, safety and welfare. The benefits to mitigate extreme heat, air pollution, public health and environmental hazards are well documented.

## Join the movement

American Forests developed Tree Equity Score to address damaging environmental inequities in tree distribution common to cities and towns all across the U.S. Tree Equity Score establishes an equity-first standard to guide investment in critical urban tree infrastructure, starting with neighborhoods with the greatest need.

We created Tree Equity Score so that every person has the information they need to advocate for the health and resilience of their community.





National Explorer

Search for a location

Census Block Group 191030105011

Population: 1,188

Iowa City, IA

IA Congressional District 2

48

Tree Equity Score

Ranked 52nd of 52 block groups in Iowa City

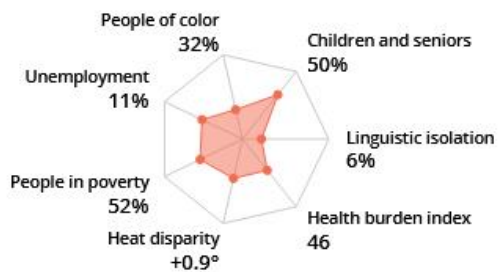
Priority: **HIGHEST**

Current canopy cover: 6%

Canopy cover goal: 50%

Score indicators

Priority index



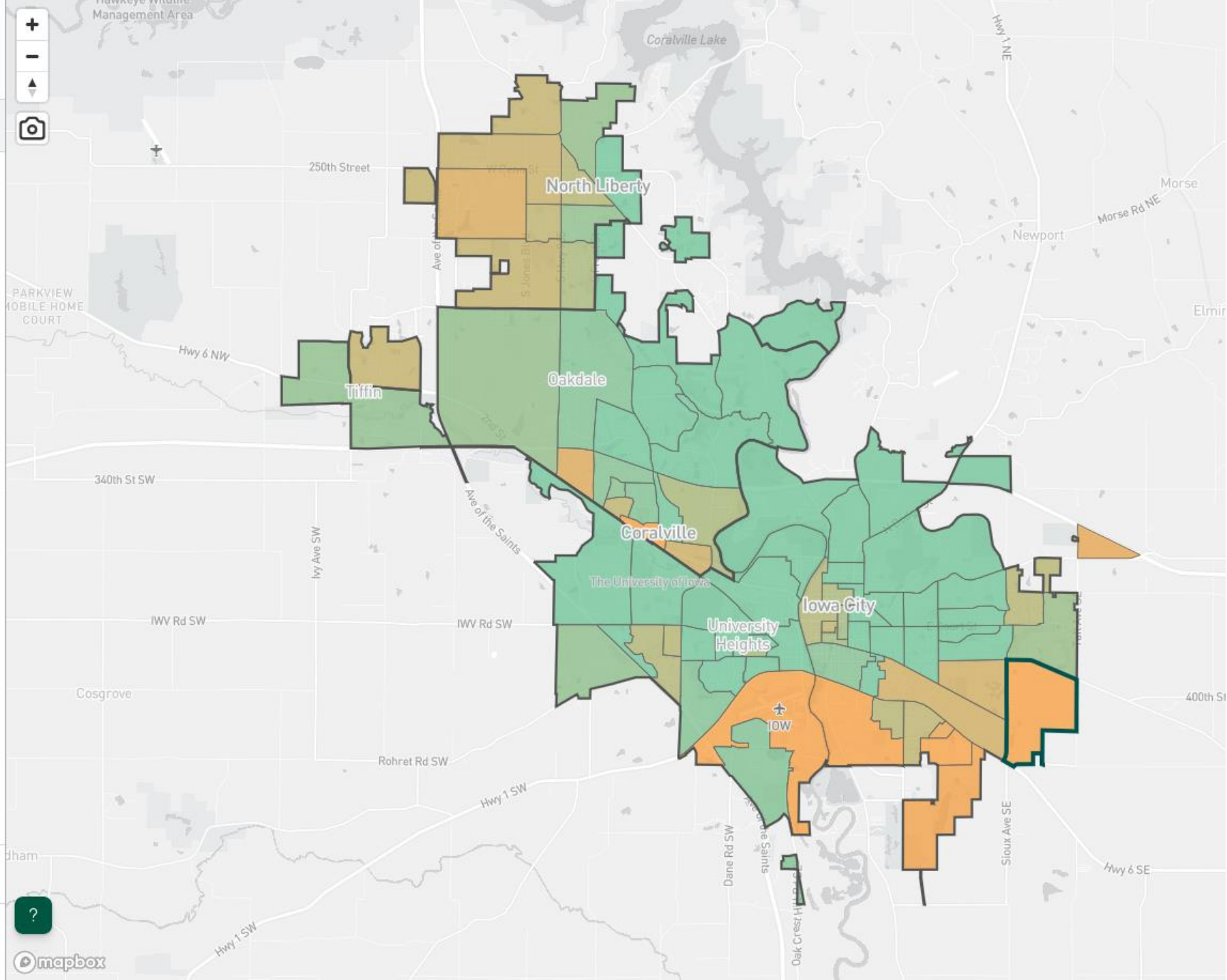
Layers

Filters

<70

100

Tree Equity Score







Search for a location



Census Block Group 191030023001

Population: 566

Iowa City, IA  
IA Congressional District 2

100

Tree Equity Score

Ranked 1st of 52 block groups in Iowa City

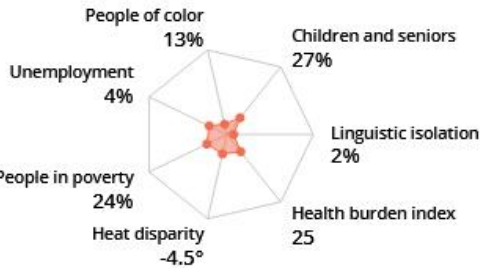
Priority: NONE

Canopy goal achieved: 39% canopy

Canopy cover goal: 30%

Score indicators

Priority index



Layers

Filters

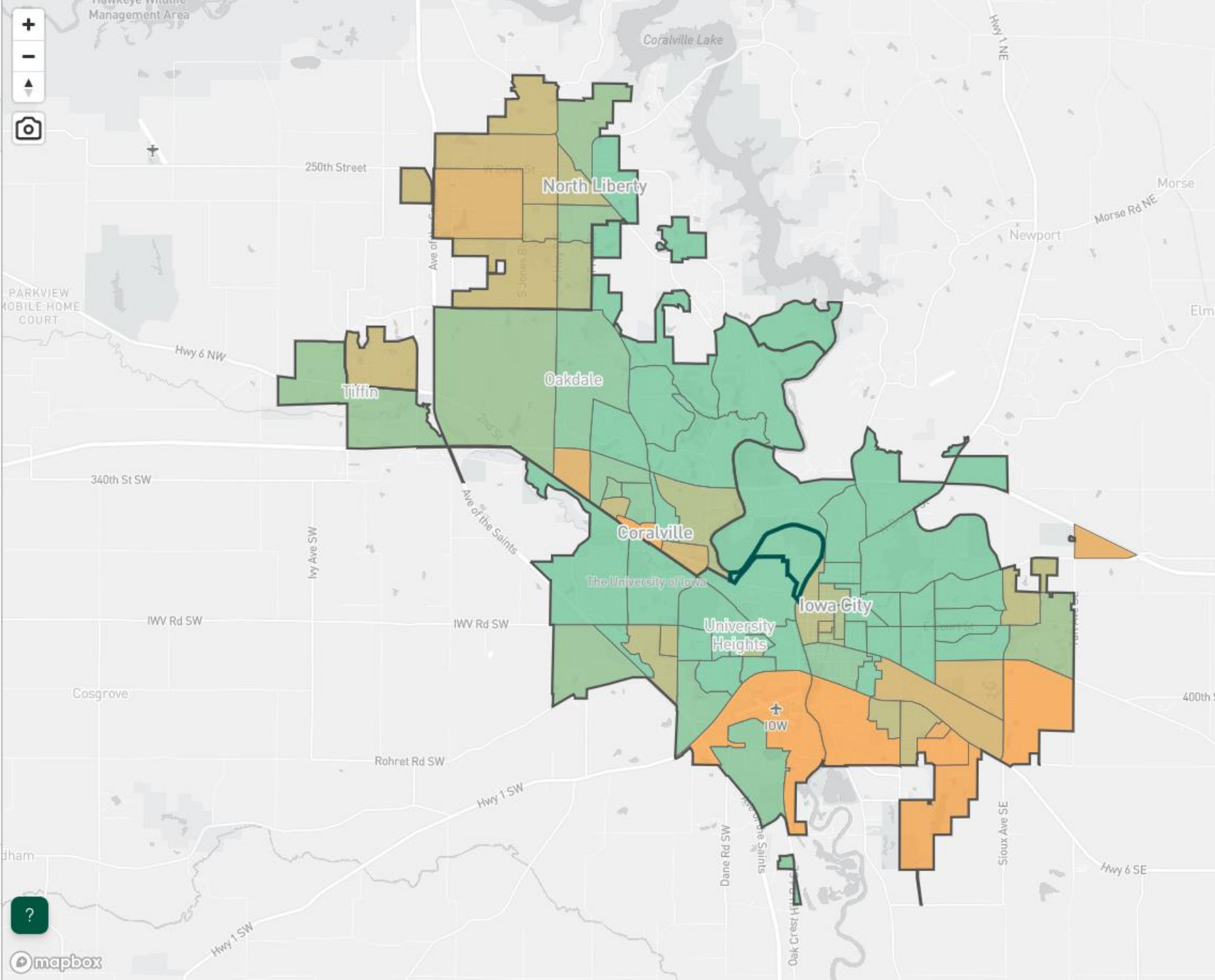
<70

100

Tree Equity Score



mapbox



<https://www.treeequityscore.org/>



# Growing Our Tree Investment Portfolio



# Past Performance Does Not Guarantee Future Results



A Winnipeg Street - before and after Dutch Elm Disease came through.



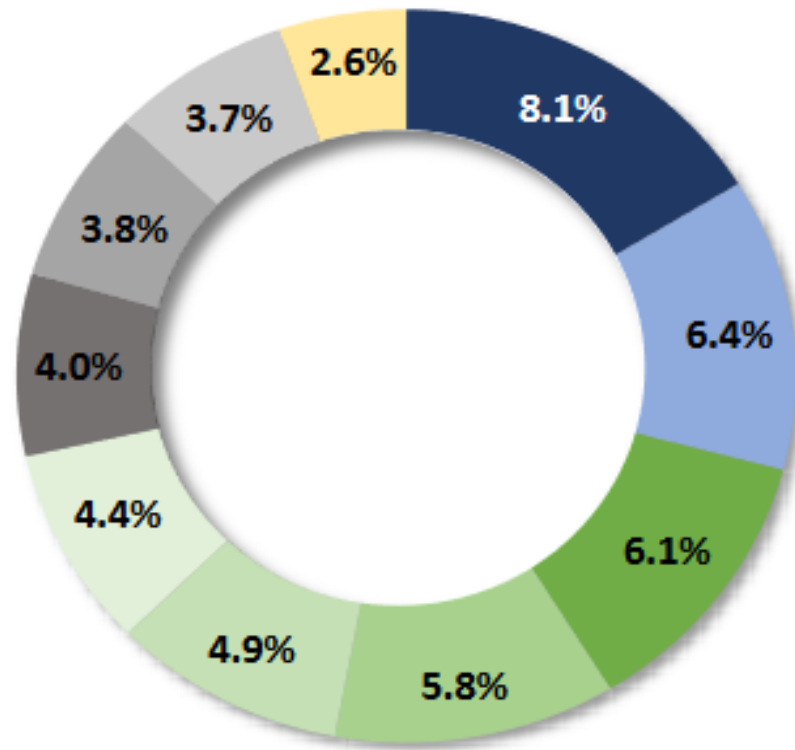
**TOLEDO STREET BEFORE AND AFTER EMERALD ASH BORER**  
BEFORE: JUNE 2006      PHOTO COURTESY OF DAN HERMS, OSU      AFTER: AUGUST 2009

# It Seemed Like a Good Idea





Top 10 tree species in Iowa City



- Silver maple
- Northern hackberry
- Green ash
- Crabapple
- Mulberry
- American elm
- Black cherry
- Boxelder
- Honeylocust
- Norway maple

# Diversify Your Tree Portfolio!

---

- Don't overplant a single genus
- Do your research
  - Native?
  - Hardy in our zone?
  - What will it look like in 10, 20, 50 years?
  - Disease/pest problems?
  - What does the adjacent tree canopy already have?
- What is your risk tolerance
- 10-20-30 rule (plant no more than 10% of 1 species, 20% of 1 genus, and 30% from the same family)

# Succession Planning/Tree Legacy

---

- The best time to plant a tree was 20 years ago. The next best time is today
- “In the normal course of events, only gods and poets are allowed to do creative acts, although commoners may get around this limitation if they understand how. One requires not to be a deity or poet to plant a pine tree; all that’s required is a shovel.” – Aldo Leopold
- “A society grows great when old men plant trees whose shade they know they shall never sit in” –Greek proverb



# Action Steps

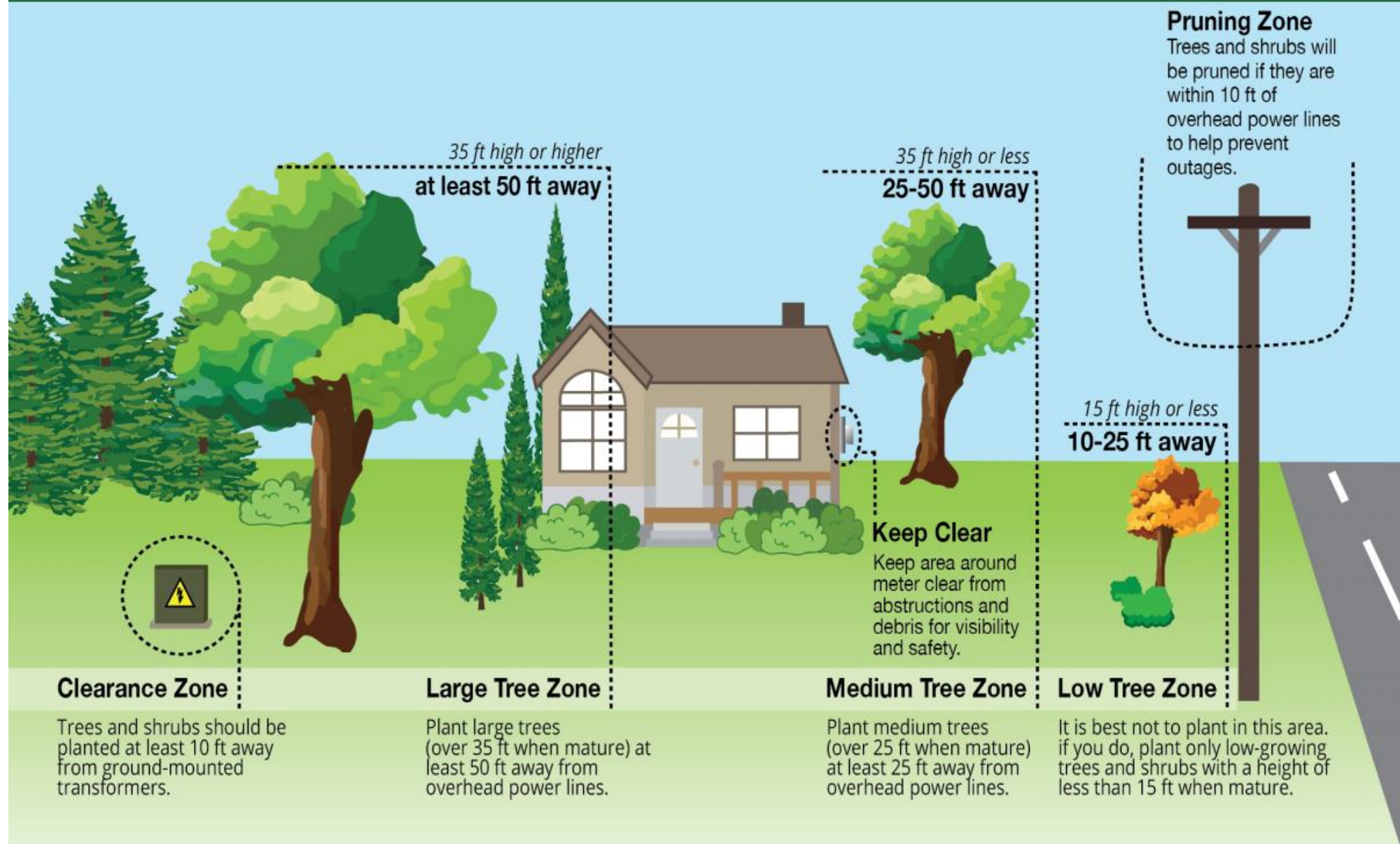
# Plant Trees! (Right Tree, Right Place)





# RIGHT TREE, RIGHT PLACE!

Before planting new trees to improve the look of your yard, you will need to keep a few things in mind.



1. **Height.** Will the tree bump into anything when it is fully grown? [\[sizing guide\]](#)
2. **Canopy spread.** How wide will the tree grow?
3. **Is the tree deciduous or evergreen?** (Will it lose its leaves in the winter?)
4. **Form or shape.** A columnar tree will grow in less space. Round and V-Shaped species provide the most shade. [\[shape guide\]](#)
5. **Growth rate.** How long will it take for your tree to reach its full height? Slow growing species typically live longer than fast growing species.
6. **Soil, sun, and moisture** requirements.
7. **Fruit.** No one wants messy droppings on busy sidewalks.
8. **Hardiness zone** indicates the temperature extremes in which a tree can be expected to grow. For the purposes of this quiz hardiness zone considerations have been disregarded. Check with your community's tree board or forestry department or a local county cooperative extension agent for a list of trees suitable for planting in your specific hardiness zone. ([Arborday.org](http://Arborday.org) hardiness zones lookup.)

# Tree Planting Projects With a Purpose

---

- Service clubs, other organizations, can make a huge contribution to enhancing our Urban Forest
- Rotary TREE Committee has planted over 1,000 trees locally
  - Reforestation (Lake MacBride)
  - Sound barrier (CCA CSD near I 380)
  - Replanting trees lost in the Derecho (Iowa City P&R)
- Where do we need more trees? ([TreeEquityScore.org](https://TreeEquityScore.org))
- Memorial Trees

# Support Tree/Environmental Organizations





# Hug Trees!



# Resources

---

- [www.treesaregood.org](http://www.treesaregood.org) (International Society of Arboriculture)
- [www.itreetools.org](http://www.itreetools.org) (Free tree and tree canopy valuation calculators)
- [www.arborday.org/programs/treecityusa/](http://www.arborday.org/programs/treecityusa/) (Iowa City recognized for 43 years)
- [treesforever.org](http://treesforever.org) (Local organization, multiple initiatives across the Midwest, key player in Derecho recovery)
- [www.fs.usda.gov/](http://www.fs.usda.gov/) (Tree Owner's Manual)
- ...And many, many more!



**Geoff Mouming**

***Project Manager***

Gmouming@Impact7G.com

319-461-8203



Sustainable Environmental Solutions



# IMPACT7G



Sustainable Environmental Solutions

